

155 MBPS WIRELESS TO CONNECT NEW BUILDING

HEALTHCARE APPLICATION

Information technology specialists face a number of challenges when designing data networks for health care providers. Not only must they create a network to handle the rigors of numerous multimedia applications and the large file transfers they require, but they must also make the network as robust and secure as possible in order to satisfy strict requirements on the handling of patients' personal records. Of course, the usual concerns for cost-effective and upgradeable solutions always apply. Building and maintaining a network to meet these criteria necessitates innovative and flexible thinking on the part of the designer.

DAOU Systems, a nationwide provider of integrated information delivery technology solutions and services to the US healthcare industry, is a company which develops innovative and carefully thought-out network solutions. DAOU has structured its resource base to handle the unique challenges offered by healthcare networking environments. Among DAOU'S information technology (IT) offerings are consulting, integration and infrastructure including up-front strategic consulting and IT system design, implementation, and long-term tactical support.

When Palomar Pomerado Health Systems wanted to add a new building to their network, DAOU Network Systems Engineer Mario Peña had to satisfy a number of demands. Because the hospital wanted to make use of ATM's multimedia capabilities, the network bridge would have to be capable of providing a full-duplex connection operating at 155 Mbps. Trenching fiber optic cable through the downtown streets was prohibitively expensive and leased line options would have cost upwards of \$4,500 per month. Having overcome similar problems in the past, DAOU knew of a better solution.

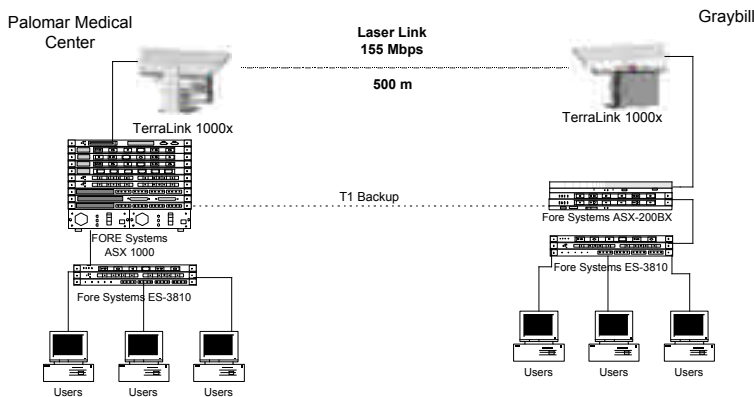
Optical Access' (formerly AstroTerra Corporation) TereScope™ optical wireless communication systems had previously been used at DAOU sites in Reno, Nevada and Morristown, New Jersey. For a onetime cost, the TereScopes can provide up a protocol-independent, full-duplex bridge operating at up to 155 Mb/s. "The TereScope 1000x was a natural solution given the hospital's bandwidth needs," said Mario Peña. "The flexibility and security of the link were important features in this application. In addition, the cost savings over leased lines and comparable microwave systems were major factors in choosing the TereScope."



"The TereScope 1000x was a natural solution given the hospital's bandwidth needs"
Mario Peña, DAOU Network Systems Engineer

The ease of installation and quick return on the initial investment made the TereScope 1000x a great choice for connecting the new building. The diagram below shows the network segment connected with the TereScopes. A leased T1 line was used as an emergency backup in case inclement weather became a problem for the optical link. Operating since September of 1998, the link has provided fast, reliable service for Palomar Pomerado Health System.

Optical Access, which operates out of San Diego, CA, offers comprehensive last-mile solutions that integrate complete switching, network monitoring, and optical wireless access for metropolitan area networks.



LOCATION:	Escondido, CA
PROTOCOL:	ATM
DATA RATE:	155 Mbps
DISTANCE:	500 m
MOUNTING:	Angle Bracket
INTERFACE:	Multimode Fiber w/ST Connector
AVAILABILITY:	99%